

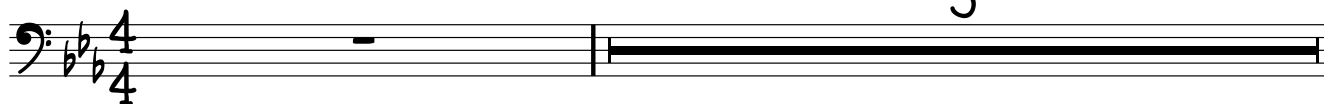
RUNAWAY

♩ = 126

JAMIROQUAI - 'HIGH TIMES: SINGLES 1992-2006' (2006)

BASS: PAUL TURNER

INTRO



(SYNTH)



VERSE



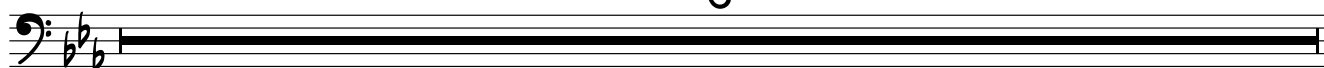
CHORUS



BRIDGE



8



CHORUS (AD LIB. ON REPEAT)

The image displays a musical score for a chorus, consisting of four staves of music. The key signature is two flats (B-flat and E-flat), and the time signature is 7/8. The notation includes various rhythmic values such as eighth and sixteenth notes, rests, and dynamic markings like accents and slurs. The first staff begins with a repeat sign and a first ending bracket. The second staff contains a double bar line with repeat dots. The third staff continues the melodic line with a slur. The fourth staff concludes the piece with a final double bar line and repeat dots.